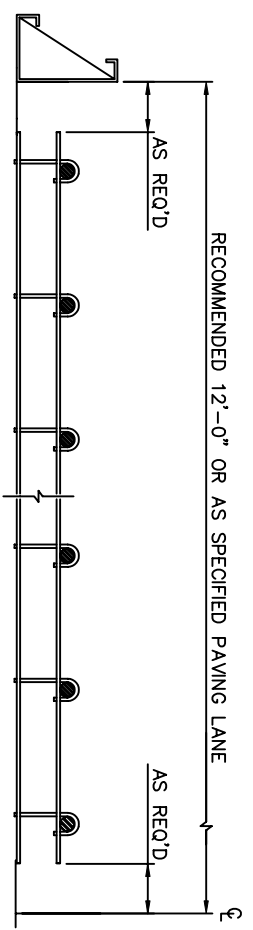
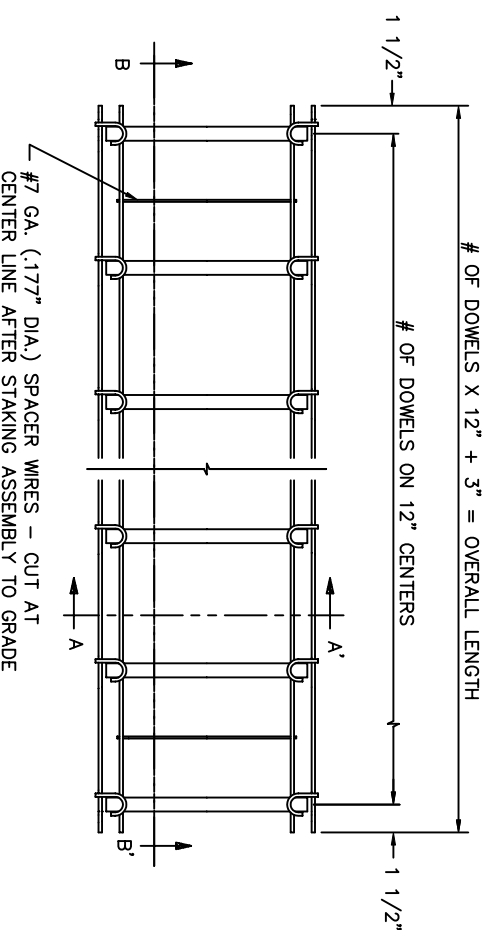


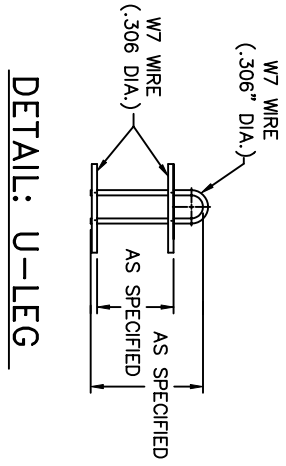
SECTION: A-A'



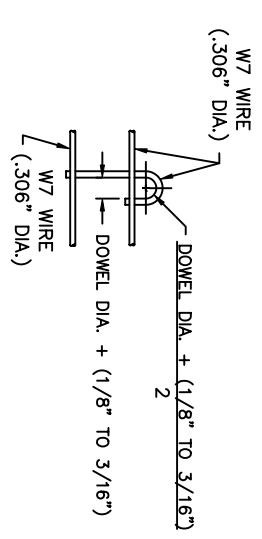
SECTION: B-B'



PLAN VIEW



DETAIL: U-LEG



ALTERNATE DETAIL: J-LEG

NOTES:

- 1) DOWELS TO BE BILLET STEEL BARS PER ASHTO SPECIFICATION M-31 GR. 40 LATEST REV. (ASTM A-615 GR. 40).
- 2) DOWELS ARE TO BE:
 - EPOXY COATED
 - TECHTL 506 COATED
- OR FACTORY COATED WITH A VISIBLE COATING OF AN APPROVED COATING COMPOUND, UNIFORMLY APPLIED BY DIPPING AND WITHOUT EXCESSIVE DRIPS OR THICKNESS, BUT IN SUCH A THICKNESS THAT ITS PRESENCE CAN BE READILY IDENTIFIED
- 3) DOWELS ARE TO BE CUT WITH STRAIGHT SURFACE AND DEBURRED.
- 4) WIRE SIZES SHOWN ARE MINIMUM REQ'D.
- 5) ALL WIRE INTERSECTIONS ARE TO BE WELDED
- 6) STAKES TYPICALLY APPLIED AT WORKING ENDS OF DOWELS WITH SUFFICIENT INSTALLATIONS TO PREVENT UNIT FROM OVERTURNING UNDER LOAD.
- 7) TOLERANCES:
 - A) $\pm 1/4\"/>$
 - B) BASKETS SHALL BE MANUFACTURED SO THAT THE DOWELS ARE HORIZONTAL AND PARALLEL FROM EACH OTHER AND PERPENDICULAR TO THE BASKET, $\pm 1/8\"/>$
 - C) ON CENTER SHOULD BE $\pm 1/2\"/>$
 - D) DOWELS SHOULD BE PLACED AT MID DEPTH OF SLAB $\pm 1/2\"/>$
- 8) U-LEG OR J-LEG TO BE INSTALLED ON INSIDE OR OUTSIDE OF SUBFRAME
- 9) DOWELS SHALL BE COATED WITH EPOXY COATING IN ACCORDANCE WITH ASHTO M294 AND THE CUT ENDS ARE NOT REQUIRED TO BE COATED
- 10) DOWEL DIAMETERS TO BE IN 1/4\"/>

PROJECT	MIDWEST CONCRETE CONSORTIUM		
LOCATION	STATE		
ACCOUNT			
SCALE	NOT TO SCALE	DRAWING NO.	
DRAWN			
DATE		SHEET 1 OF 1	