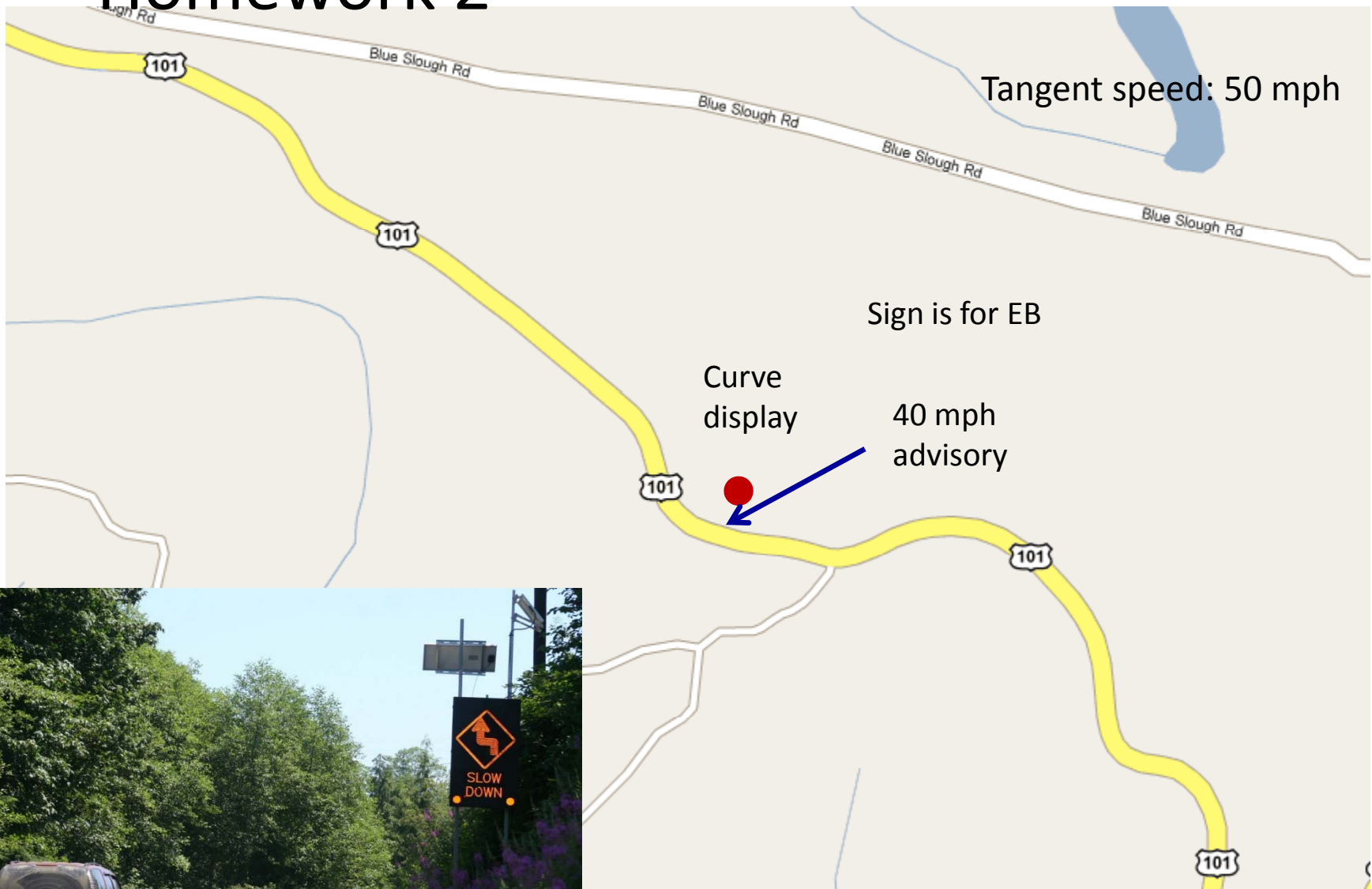


Homework 2

WA Curve 15 US 101



Homework 2



WA Curve 15 US 101

Homework 4 Due week of Wed Sept 19 at the beginning of class

Objective: Calculate and compare whether the sign was effective in Reducing speeds along US 101

- 1) For the before data, calculate mean, mode, median, Std, 85th percentile
- 2) Compare means (use t-test for comparison) and 85th speeds for the before and after period.
- 3) Briefly discuss: Was the sign effective in reducing speeds? Was the reduction meaningful?
- 4) Using the last spreadsheet (sample), compare the mean and 85th percentile speeds for the randomly collected sample and compare to the full sample (before data). Is the random sample a good representation of the population?